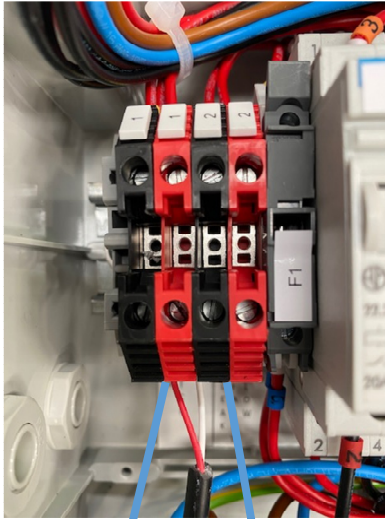
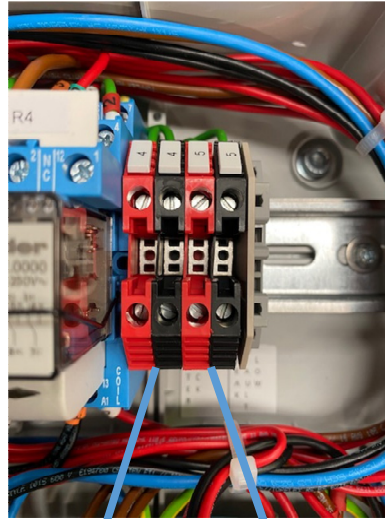


CTS Fuel Recirculation Unit - Wiring



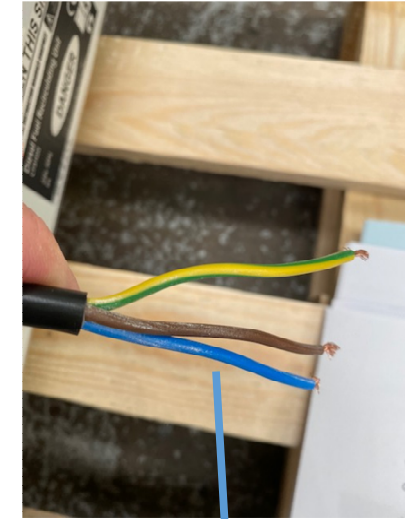
INPUT 1 – Clean Contact N/O activate on close
Flow Switch Input

INPUT 2 Clean Contact N/O activate on close
LOW Level Switched input
LEAK switched input
Wire in parallel if using a Low Level input sensor and a Leak sensor



OUTPUT 4 Clean contact N/O activate on close
Filter Blocked Indication

OUTPUT 5 Clean contact N/O activate on close
General Output for LOW LEVEL sensor
General Output for LEAK sensor
General Output for Internal Fault sensing



POWER INPUT
230v @ 50Hz
Cable from Emergency Stop Button.
LIVE = BROWN
NEUTRAL = BLUE
EARTH = GREEN/YELLOW