

Anti-siphon valve



The anti-siphon valve is essential when using a dispenser connected to an aboveground tank (same conditions as for an underground tank)

It avoids accidentally emptying the tank by overloading the degasser and thereby prevents product loss and site pollution

It ensures that the pumping equipment operates correctly

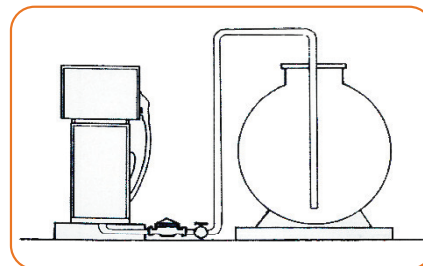
Technical Specifications

- DN 40/49
- Connection via triangular 1"1/2 flanges (included)
- Fitted with a filter for any impurities that may be present
- Maximum liquid column : 6 m
- Maximum flow rate : 83 liters/minute - 5 m3/h
- Possible to install 2 anti-siphon valves to double flow rate up to 166 liters/min
- Must be fitted horizontally as near the dispenser as possible
- High resistance aluminium body, copper-aluminium check valve, special hydrocarbon seals
- Valve adjustment by screw to ensure perfect adaptation to your installation

Advantages

- Avoids accidental emptying, no product loss, no pollution
- Perfectly regular flow rate (original design limits beating effects)
- No risk of valve being blocked by impurities due to the use of a filter
- Limited loss of hydraulic force
- Maintained without having to remove pipe work
- Perfect stability and water tightness
- Very durable product

Reference	Description
13000000	Anti siphon valve DN 40



ANTI-SIPHON VALVE

INSTALLATION AND USE DATA SHEET REF. 1 30 00 15 0

03/99

USE

The anti-siphon valve ensures the smooth running of all distributor pumps working from overhead tanks (maximum height 6 m). It avoids the overpressure in the air separator and siphoning of the tank.

TECHNICAL CHARACTERISTICS

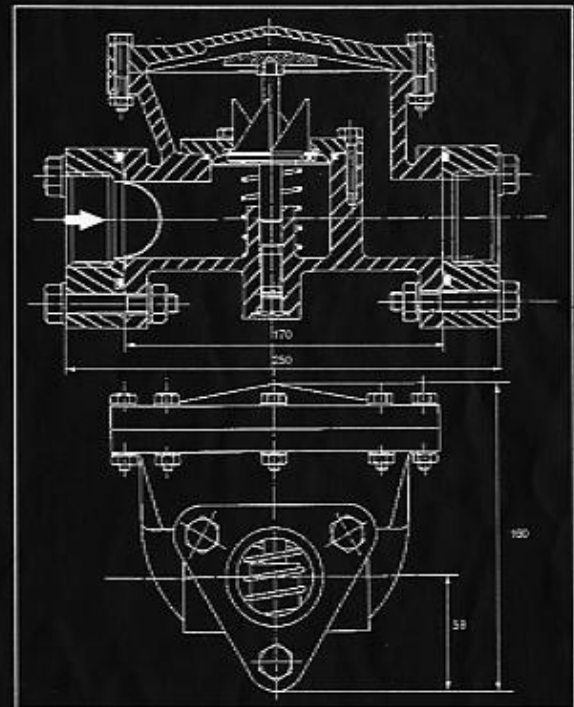
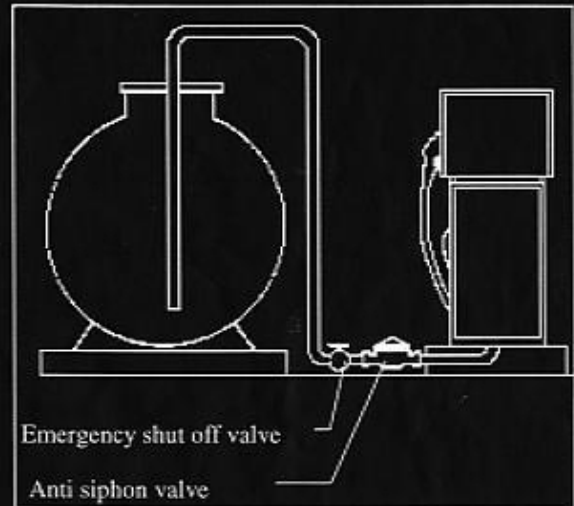
The helicoidal racks of the valve is designed to favour the progressive opening and then regulates flow. A filter prevents valve mechanism from impurities. This valve makes only few head loss. Only design ND 40 (1" 1/2). Manufactured in corrosion resistant cadmium steel-bronze valve - special hydrocarbon joins.

MOUNTING INSTRUCTIONS/MAINTENANCE

- No other anti-return valve shall be installed on the aspiration pipe.
- The way flow is indicated under the cap by an arrow.
- The antisiphon valve must be installed on the main delivery line from the tank and as close to the distributor pump taking care not to obstruct the air hole of the cap.
- All servicing and maintenance work on the valve can be carried out without disconnected fuel lines by installing shut off valves for any maintenance work.
- A screw adjustment under the valve controls the valve to the flow rate and avoids any knocking phenomenon.
- The internal filter must be regularly cleaned which is on the inlet side of the valve.

SPARE PARTS

REFERENCE	DESCRIPTION
1 30 00 110	Diaphragm
1 30 01 070	Screws and O rings blister
1 30 01 020	Valve and seat set



FACTORY TESTED PRODUCT

(dimensions in mm)