

CTS AdBlue Battery Level Alarm



Code: SWS3022

Battery Requirements	9v PP3 (Alkaline Only)
Operating Temps	-20c to +50c
Dimensions	155 (L) x 95 (H) x 60 (D) mm
Colour	Light Grey RAL 7035
IP Rating	IP55
Float Material	Polypropylene
Max Viscosity	2000 cSt
Cap Mount	1 1/2" BSP F
Cable Length	5m

INSTALLATION

Mount the box securely using 4 Non-Countersink screws – **Do not over-tighten** the fixings

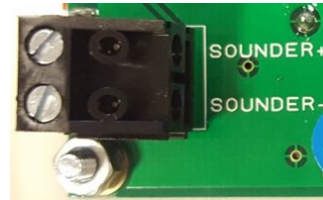
Remove the single cross head cover screw (the other 3 are in an internal bag)

Turn the face of the alarm over to reveal the connections & battery holder

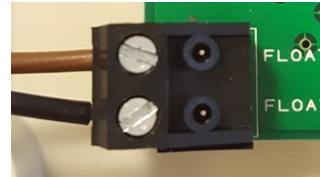


Pull off the sounder connector and wire the cable from the sounder into this and plug this connector on last before closing the lid.

Ensure that the **RED** wire connects to the **+** terminal.



Pull off the float connector. Wire the probe cable to the float connector (its not polarity sensitive) and replace onto the board.



Insert the battery into the holder making sure the correct polarity of the connections, then push down at the base of the battery to secure in place.

The alarm will beep 3 times when the battery is connected.



PROBE INSTALLATION

The probe comes supplied with:

- 1x High Viscosity Probe c/w weight
- 1x Plastic tank plate
- 1x Cable gland for tank plate
- 2x self tapping screws



Fit the cable gland to the tank plate.

Feed the probe cable through the gland.

Carefully remove the probe weight from its packaging, being cautious not to misplace the 2 small screws.

...

Place the wire and metal weight into the plastic housing.



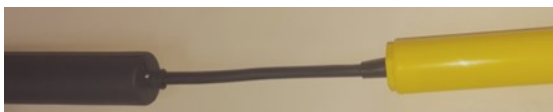
Close the housing making sure the clips fasten on either side.



Using the screws provided, screw both halves of the housing together.



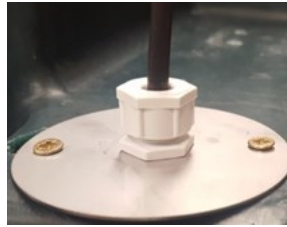
The weight and housing should be fitted 125mm from the top of the probe.



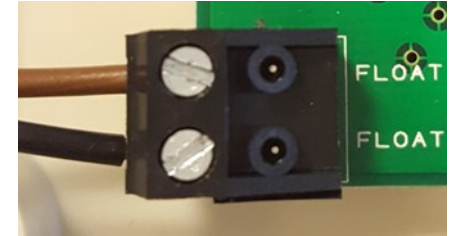
Lower the probe into the tank, ensuring the bottom of the weight chamber is set to the **HIGH** level.

...

Fix the tank plate to the tank using the supplied self-tapping screws.



Wire the probe cable into the float connector on the alarm board. **ONLY** use the Brown and Black wires from the probe cable.



OPERATION

The alarm is constantly checking the probe state, but to give a visual conformation to the user, a test function is provided.

Press and hold the **TEST** button.

The red LED will **FLASH** 3 times and the sounder will **BEEP** 3 times—this indicates that the LED and sounder are functioning.

If the alarm activates then the LED will long **FLASH** and the sounder will long **BEEP** once every 2 seconds.

This will continue until either:

1. The **MUTE** button is pressed for 3 secs
2. Or the float exits from the alarm condition

If the **MUTE** button is pressed then the red LED will continue to flash once every 3 seconds, but the sounder will be silenced.

The alarm will sound for in excess of 72 hours in full alarm mode, and with a new battery it will operate for more than 2 years in standby operation.

BATTERY LOW INDICATION

If the battery becomes discharged, the red LED will **FLASH** slowly and the sounder will **BEEP** similar to a smoke alarm. Please change the battery as soon as possible.