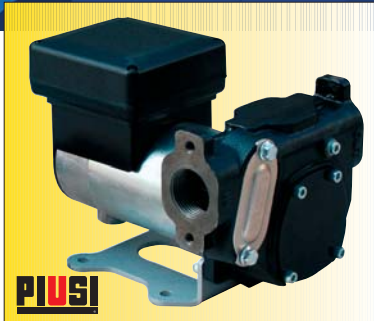


**DC PUMPS
Panther 56 & 72**



COMPLETING THE **PANTHER** RANGE OF PUMPS FOR TRANSFERRING DIESEL FUEL, THESE PUMPS ARE OF THE ROTARY BLADE TYPE AND SELF-PRIMING WITH HIGH FLOW RATE AND EASY OPERATION AND INSTALLATION.

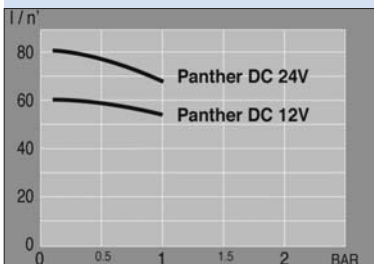
BESIDES FEATURING AN INTEGRATED BY-PASS VALVE AND SUCTION FILTER, THEY ARE ALSO EQUIPPED WITH A MECHANICAL SEAL THAT ENSURES A HIGH STANDARD OF RELIABILITY EVEN AT LOW OPERATING TEMPERATURES.

COMPACT, SAFE AND RELIABLE, THEY CAN BE FITTED TO EARTH-MOVING MACHINES, MOBILE DISPENSERS ON MOTOR VEHICLES AND FIXED DISPENSERS WHERE ONLY BATTERY POWER IS AVAILABLE.

CARRY PANTHER 72 DC - NO NEED TO ADAPT PUMP OR CHANGE THE FUSE TO USE A DIFFERENT VOLTAGE

TECHNICAL FEATURES

- PUMP BODY IN CAST IRON WITH ANTI-CORROSION TREATMENT AND PAINTING
- SUPPORT BASE
- BLADE TYPE PUMP WITH SINTERED STEEL ROTOR AND ACETALIC RESIN BLADES
- MECHANICAL SEAL
- INCORPORATED BY-PASS VALVE
- DC MOTOR WITH BRUSHES AND PERMANENT MAGNETS
- CONNECTOR BLOCK WITH ON/OFF SWITCH
- PROTECTION FUSE
- DEGREE OF PROTECTION: IP55
- FILTER 100µ INCORPORATED IN PUMP BODY, EASY ACCESS FOR MAINTENANCE
- THREADED 1" COUPLING DIRECTLY ON PUMP BODY



TECHNICAL INFORMATION

CODE

Description	Pump	Motor			Rpm	Connections	Fuse on the Cable	CODE
	Flow Rate L/min Max	Tension V	Current Amp Max	Duty Cycle Min				
Carry Panther 56 DC 12V c/w 2mtr Cable	56	12	35	30	2900	1"G	•	34004A
Carry Panther 72 DC 24/12V c/w 2mtr Cable	70	24	25	30	3500	1"G	•	34104A
	35	12	16	30	1800	1"G	•	
Battery Kit Panther 12V	56	12	35	30	2900		40	340030
Battery Kit Panther 24V	70	24	25	30	3500		30	341030
	35	12	16	30	1800		30	