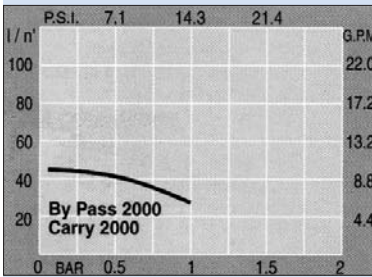


DC PUMPS

By-Pass 2000



SELF-PRIMING ROTARY ELECTRIC VANE PUMPS FOR THE TRANSFER OF DIESEL FUEL. ALL MODELS ARE EQUIPPED WITH BY-PASS VALVE. POWERFUL, RELIABLE AND ECONOMICAL, THEY ARE AVAILABLE WITH 12 AND 24 VOLT DIRECT CURRENT MOTORS. THANKS TO THEIR COMPACT SIZE, EASE OF INSTALLATION, RELIABILITY AND SAFETY, THESE PUMPS ARE USED AS THE PRIMARY SYSTEM ON EARTH MOVING MACHINERY, MOBILE FUEL PUMPS, VEHICLES AND IN CONSTRUCTION YARDS.

TECHNICAL CHARACTERISTICS

- CAST IRON PUMP BODY FINISHED WITH ANTI-CORROSION PAINT
- VANE PUMP WITH SINTERED STEEL ROTOR AND ACETAL RESIN VANES
- BY-PASS VALVE INCORPORATED IN THE PUMP BODY
- DIRECT CURRENT BRUSH MOTOR WITH PERMANENT MAGNET STATOR
- MOTOR PROTECTION GRADE IP55
- USED IN INTERMITTENT SERVICE WITH 30 MINUTE WORK CYCLES
- PUMP ATTACHMENT SUPPORT BRACKET

BY-PASS 2000 MODEL

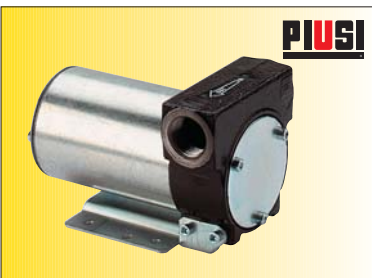
AVAILABLE IN TWO VERSIONS (12 AND 24 VOLT) WITH 3/4" THREADED CONNECTORS ON THE PUMP BODY.

BY-PASS 2000 CARRY MODEL

AVAILABLE IN 12 AND 24 VOLT VERSIONS. 3/4" THREADED CONNECTORS ON THE PUMP BODY. SWITCH BOX AND FUSE CARRIER, COMPLETE WITH POWER CABLES AND CLAMPS FOR CONNECTION TO TERMINAL STRIPS.

BY-PASS 2000 BATTERY KIT MODEL

PORTABLE FUEL TRANSFER UNIT. AVAILABLE IN 12 AND 24 VOLT COMPLETE WITH HOSE AND NOZZLE.



BY-PASS 2000

CODE

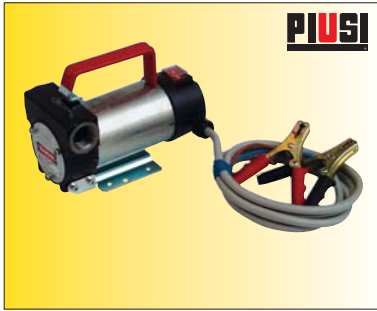
40 LITRES PER/MIN, VANE TYPE C/W BY-PASS AND MOUNTING PLATE. 3/4" FEMALE PORTS. CONFORMS TO CE STANDARD.

12V
24V

33500B
33600B

CATEGORY A

TRANSFER PUMPS ONLY



BY-PASS 2000 CARRY

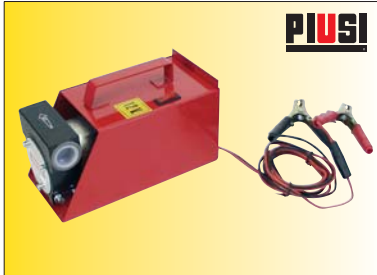
CODE

40 LITRES PER/MIN, VANE TYPE C/W BY-PASS AND MOUNTING PLATE, CARRY HANDLE AND ON/OFF SWITCH. 3/4" FEMALE PORTS. ALSO 2 MTR BATTERY CABLE AND CLIPS. CONFORMS TO CE STANDARD.

12V
24V

22300A

22400A



BY-PASS 2000 CARRY BOX TYPE

40 LITRES PER/MIN, VANE TYPE C/W BY-PASS ALL CONTAINED IN METAL BOX WITH HANDLE, ON/OFF SWITCH. 3/4" FEMALE PORTS. ALSO 2 MTR BATTERY CABLE AND CLIPS. CONFORMS TO CE STANDARD.

12V
24V

22302A

22402A



BY-PASS 2000 BATTERY KIT VERSIONS

40 LITRES PER/MIN, PUMP, C/W CARRY HANDLE, MOUNTING PLATE, ON/OFF SWITCH, 4 MTR 3/4" HOSE, 2 MTR BATTERY CABLE AND CLIPS. CONNECTORS AND FILTER. SELF 2000 NOZZLE. CONFORMS TO CE STANDARD IN RETAIL PRESENTATION BOX.

12V
24V

22500A

22600A



BY-PASS 2000 BATTERY KIT BOX TYPE VERSIONS

40 LITRES PER/MIN, CONTAINED IN METAL BOX WITH CARRY HANDLE AND ON/OFF SWITCH. 4 MTR 3/4" DELIVERY/SUCTION HOSE. 2 MTR BATTERY CABLE AND CLIPS. HOSE CONNECTORS AND FILTER. CONFORMS TO CE STANDARD.

12V
24V

22503A

22603A

TECHNICAL INFORMATION

Description	Pump		Motor			Rpm	Connections	Weight Kg	
	Flow Rate L/min Max	Tension V	Current Amp Max	Fuses Capacity	Duty Cycle Min				
By-Pass 2000 12V	40	12	22		30	2800	3/4"G	3.5	33500B
By-Pass 2000 24V	43	24	13		30	2800	3/4"G	3.5	33600B
By-Pass 2000 Carry 12V c/w 2mtr Cable	40	12	22		30	2800	3/4"G	4.2	22300A
By-Pass 2000 Carry 24V c/w 2mtr Cable	43	24	13		30	2800	3/4"G	4.2	22400A
By-Pass 2000 Carry Box Type 12V	40	12	22		30	2800	3/4"G	4.2	22302A
By-Pass 2000 Carry Box Type 24V	43	24	13		30	2800	3/4"G	4.2	22402A
By-Pass 2000 Battery Kit Versions 12V	38	12	22	25	30			7.5	22500A
By-Pass 2000 Battery Kit Versions 24V	38	24	13	15	30			7.5	22600A
By-Pass 2000 Battery Kit Box Type Versions 12V	38	12	22	25	30			7.5	22503A
By-Pass 2000 Battery Kit Box Type Versions 24V	38	24	13	15	30			7.5	22603A